



SK-100 LITE

Info Kiosk

The QubePos SK-100 Lite is a multifunctional kiosk scanner designed for diversified applications in self-service, ID identification, information service, multimedia service, digital signage and other interactive applications in retail, transportation, healthcare, hospitality and office building. The SK100 Lite also comes with an extensive set of web-based management tools allowing effective management.

SK-100 LITE

Info Kiosk



Features

- Display: 3.5" colour display
- Self-Detection and Configuration of Scan-Engine
- Standby Scheduler for Sustainable Use
- Scanner Options: Laser Omni, CCD Single Line, 2D imager
- Interface Options: Ethernet, Power over Ethernet (PoE), WIFI
- Configuration: Standard Web Browser



Specifications

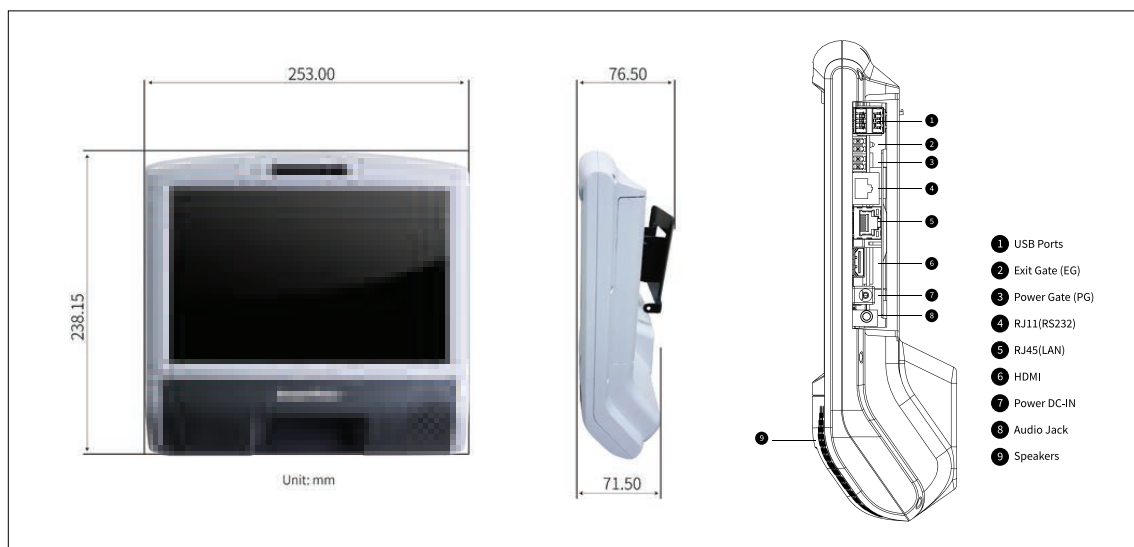
Specsheet

System Architecture	Processor	ARM Dual-core / Quad-core CPU
	Internal Storage	8G eMMC Flash
	Memory RAM	1GB or 2GB LPDDR3
	Operating System	Linux 3.4 or Android 6.0
Output Media	Image Format	PNG, JPEG, GIF, BMP
	Audio Format	WAV, WMA, MP3
	Video Format	MPEG-4, H.264
	Display Size	10.1" TFT LCD display
	Brightness	450 nits
	Resolution	1280x800 pixels
	Speakers	3Watt x 2(Stereo)
	Touch Screen	100MB Base-TX/10MB Base-T(802.3) standard on board
Network Interface	Wired LAN	10/100Mb Ethernet 802.3; Power over Ethernet 802.3af (optional)
	Wireless LAN	802.11 a/b/g/n/ac 2.4G/5G Dual Band (optional)
	Encryption Protocols	WPA, PSK and WPA Enterprise security
	Application	Door Lock Control Application Dual Display Multi-media Retail Solution
Specification	Resolution	0.127mm/5mil UPC/EAN, 0.26/10mil 2D barcode
	Indicators	LEDx2
	VESA Mounting	75 x 75 mm
	Interface	USBx3, HDMIx1, RS232x1, LANx1(for Ethernet or PoE), GPIO x 2 (2-pin signal output, 2-pin power output)
Physical & Environment	Operating Temperature	0°C to 40°C (32°F to 72°F)
	Storage Temperature	-20°C to 60°C (-4°F to 140°F)
	Humidity	Up to 95% RH (non-condensing)
	Power Supply	DC 12V/2A 24W Power Adaptor/Power over Ethernet (PoE) IEEE 802.3af (optional)/Power over Ethernet (PoE+) IEEE 802.3at (optional)
	Dimensions (WxHxL)	252 x 238.15 x 71.5 mm
	Weights	Approx. 1.25 kg
Regulatory	Regulatory	CE, FCC, RoHS
Accessories	Accessories	Power Adapter, VESA mount bracket (75x75mm)
Data Capture Specifications	Scanner Technology	2D area imager scanner for 1D/2D barcode
	Resolution	0.127mm/5mil UPC/EAN, 0.26/10mil 2D barcode
	Ambient light	Up to 100,000 Lux
	Light source	632±5nm Red LED

* Specification may change without prior notice

QubePos®

System Specifications



Application Keynotes

The SK-100 could be deployed for self-service and interactive applications including and not limited to:



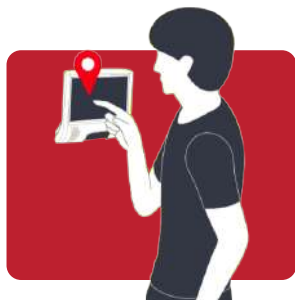
Product Info & Price Look Up



Building Access



Product Ingredient Survey



In-Store Location Query



Dual Display



Multimedia Services



In-Store Ordering



Digital Signage & Promotion



QUBE APPS SOLUTIONS SDN. BHD. (981542-A)

No. 2-32A1, Jalan Desa 1/1, Desa Aman Puri,
52100 Kuala Lumpur, Wilayah Persekutuan
Office No. : +603-62625182
Mobile No. : +6010-8825182
Website : qubeapps.com

